

# **MEDIC INSTRUCTIONS**

## **RED LABEL ROM PACK UPDATES**



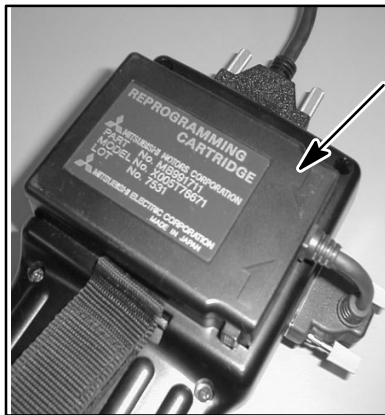
**Red Label  
ROM pack  
p/n MB991701**

**Red label ROM pack updates** can be accomplished using MEDIC. Follow these procedure for updating **red** label ROM packs using MEDIC. The red label ROM packs are used for reprogramming most ECUs and PCMs.

Dealers with MEDIC should have three red label ROM packs. If you are missing a **red label ROM pack**, call OTC/SPX Corp. at (888) 727-6672, then select option #2 for tools. "Blank" replacement ROM packs are available for approximately \$300.00 each.

### **PROCEDURE**

1. Install the **red label** ROM pack you want to update into the MUT-II.



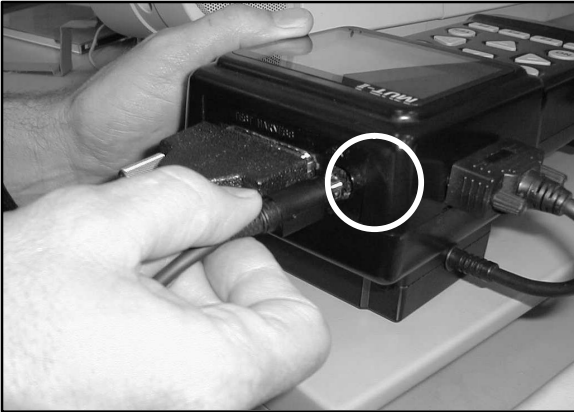
**INTERFACE  
CARTRIDGE  
MB991711**

2. Install the MMC ECU Reprogramming Interface Cartridge (p/n MB991711) on the MUT-II as shown.



3. Install a "**256 KBYTE**" memory card at the bottom of the MUT-II.

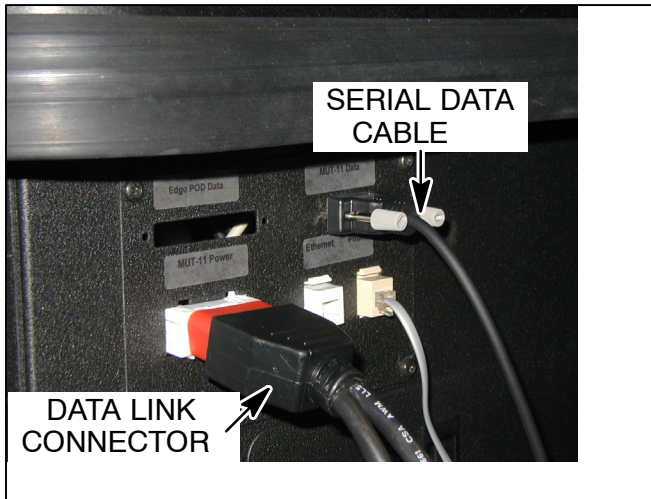
If your memory card is marked "128 KBYTE", locate the 256 KBYTE memory card (p/n MB991717) supplied with the Interface Cartridge. You can also use MB991500, which has 256 KBYTE memory.



4. Make the following electrical connections:

- a. Connect the serial data cable (with the flat side facing down) to the MUT-II.

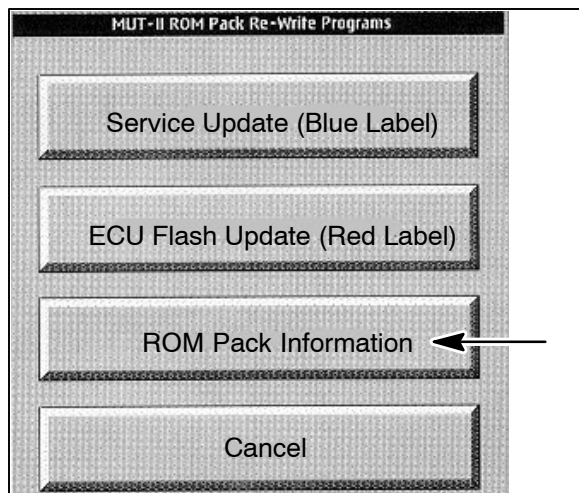
NOTE: Be sure the cable is fully seated. If it is not, you will get a "Communication Error" on the MEDIC screen.



- b. Connect the serial data cable to the MEDIC.
- c. Connect the MUT-II 16-pin data link connector to the MEDIC cabinet. The MUT-II should power on. (On MUT-II+ units, turn the switch on.)

5. From the MEDIC main menu, select **MUT-II ROM Pack Re-Write**.





6. Select **ROM PACK Information**.

The following information will display:

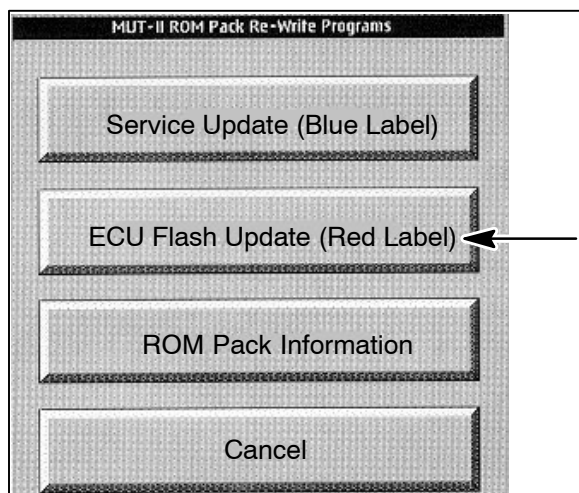
PRINT this CHART

MMC ECU Reprogramming (RED LABEL) Databases, revised 2/21/02

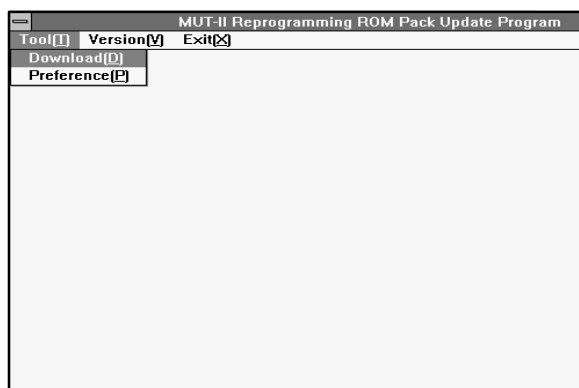
TSB Number	Affected Vehicle	Database No. in TSB	Database No. in MEDIC	Password
TSB-99-13-005	1999 Galant 2.4L	RN99051	RN99051	0345
TSB-99-13-007	1998-99 Mirage	RN99081	RN99081	4217
TSB-98-13-013REV	1999 Galant	RN98101	RN99051	0345
	1999 Eclipse & Eclipse Spyder	RN98102	RN98102	4318
SR-99-001	1999 Montero Sport 3.0L	RN99031	RN01041	9837
TSB-01-23-007	1999 Montero Sport 3.5L	RN99032	RN01042	9837
	2001 Montero 5-speed A/T	RN00103	RN00103	6258
	2001 Montero 4-speed A/T	RN00101	RN00101	8229
	1999 Montero Sport 3.0L 2WD/4WD	RN00121	RN01041	3132
TSB-01-23-007	1999 Montero Sport 3.5L 2WD/4WD	RN00121	RN01042	9432
	2000 Montero Sport 3.0L (CA) 2WD/4WD	RN00122	RN00122	6394
	2001 Montero Sport 3.0L 2WD	RN00123	RN00123	2595
	2000 Montero Sport 3.0L (FED) 2WD/4WD	RN00124	RN00124	7677
	2001 Montero Sport 3.5L 4WD	RN00125	RN00125	3781
	2001 Montero Sport 3.5L 2WD	RN00125	RN00125	3781
TSB-02-13-006	2000 Montero Sport 3.5L (CA) 2WD/4WD	RN00125	RN00125	3781
	2002 Lancer (CA) M/T	RN01127	RN01127	1032
	2002 Lancer (CA) A/T with 15" tire	RN01128	RN01128	1632
	2002 Lancer (FED) M/T	RN01129	RN01129	2932
	2002 Lancer (FED) A/T with 14" tire	RN0112A	RN0112A	7832

Note the appropriate password and "DATABASE # IN MEDIC" (RN number) that you wish to program. (The database list is subject to change as new databases become available.)

Press the "Print Screen" button to print a copy of this information.

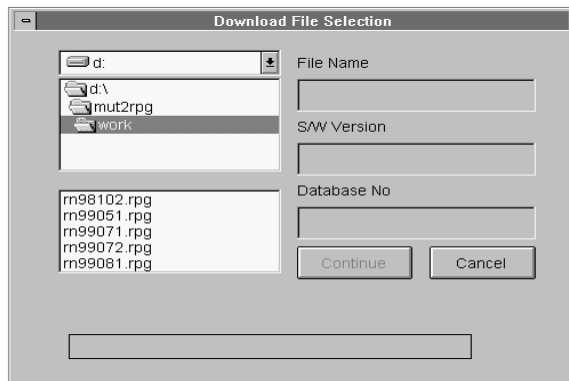


7. Select **ECU Flash Update (Red Label)**.

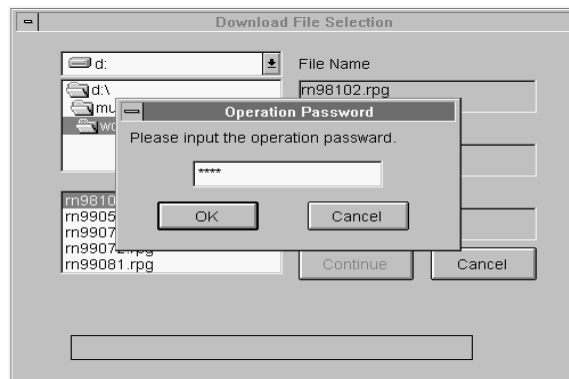


8. Select **Tool(T)** from the top menu, and then select **Download**.

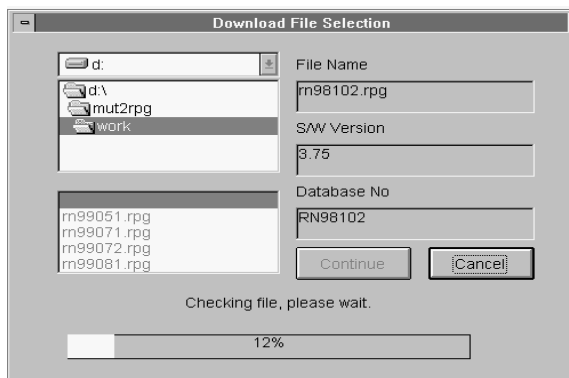




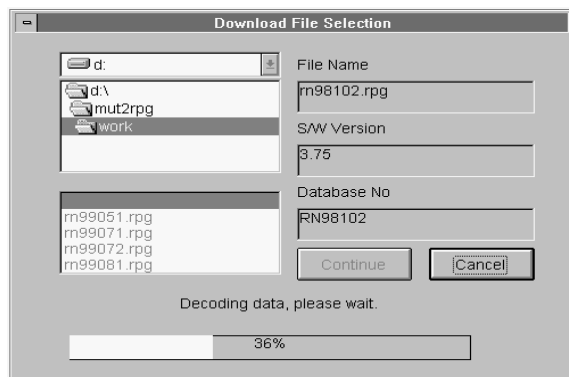
9. Select the file to be downloaded:
  - a. Select **d: \ mut2rpg \ work** (double-click).
  - b. Select (double-click) the appropriate database ("rn" number) previously noted.
  - c. Press **Continue**.



10. The password screen will display. Enter the appropriate password for the update you selected.  
  
As you type, the password will be encrypted (actual text will not display).

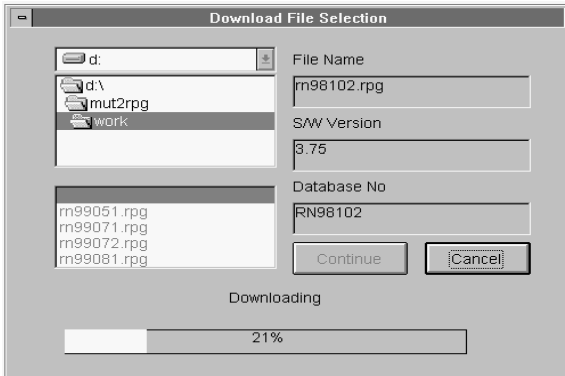


11. When this screen displays, MEDIC is verifying the content of the update files to download.



12. When this screen displays, MEDIC is decoding the update information for the download.

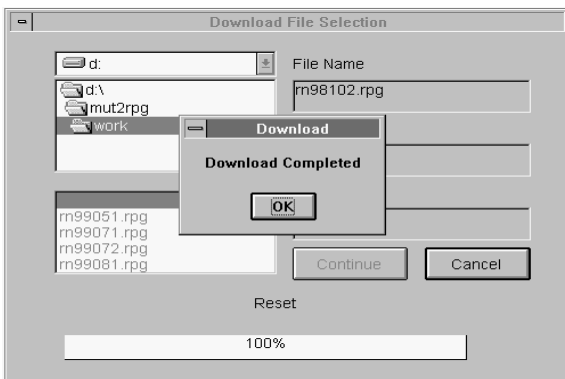
**NOTE:** If your update stops at 30%, recheck your serial data cable connections.



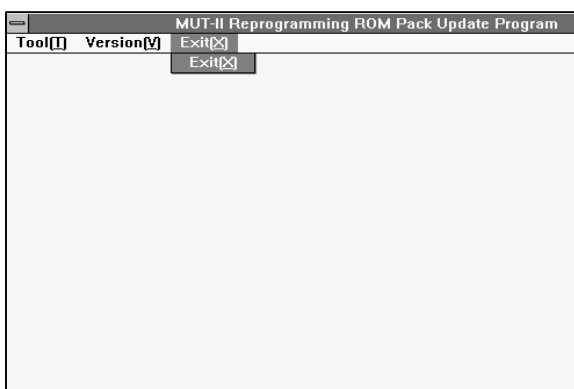
13. During the update process, this screen will display. The % completed display will remain on screen while the update is being downloaded, to indicate its progress.

**DO NOT MAKE ANY SELECTIONS, TASK-SWITCH, PRESS ANY KEYS, OR DISCONNECT ANY ELECTRICAL CONNECTIONS DURING THE UPDATE PROCESS. IF A RED ROM PACK UPDATE DOES NOT COMPLETE, YOU MUST REPEAT THIS PROCEDURE FROM STEP 1, USING A DIFFERENT RED LABEL ROM PACK, P/N MB991701.**

It will take approximately 20 minutes for the ROM pack to update, depending upon the update you selected.



14. After the update is complete, this screen will display.



15. The MUT-II screen will display the new ROM pack level, then return to the Main Menu.

To return to the main MEDIC screen, select **Exit**.



16. Write the new database number on a ROM pack label, then affix it to the ROM pack as shown.

[Return to MUT-II Tutorial](#)